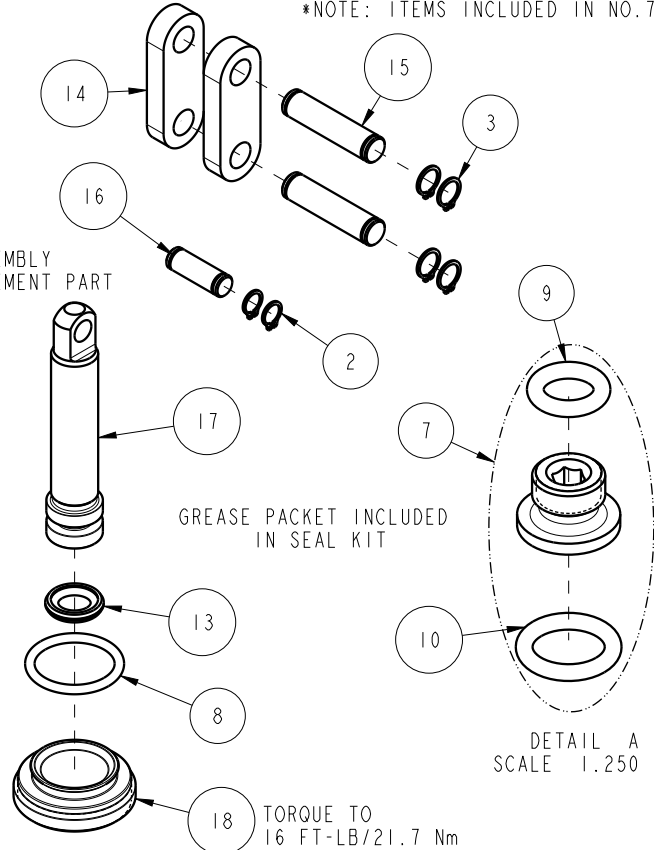
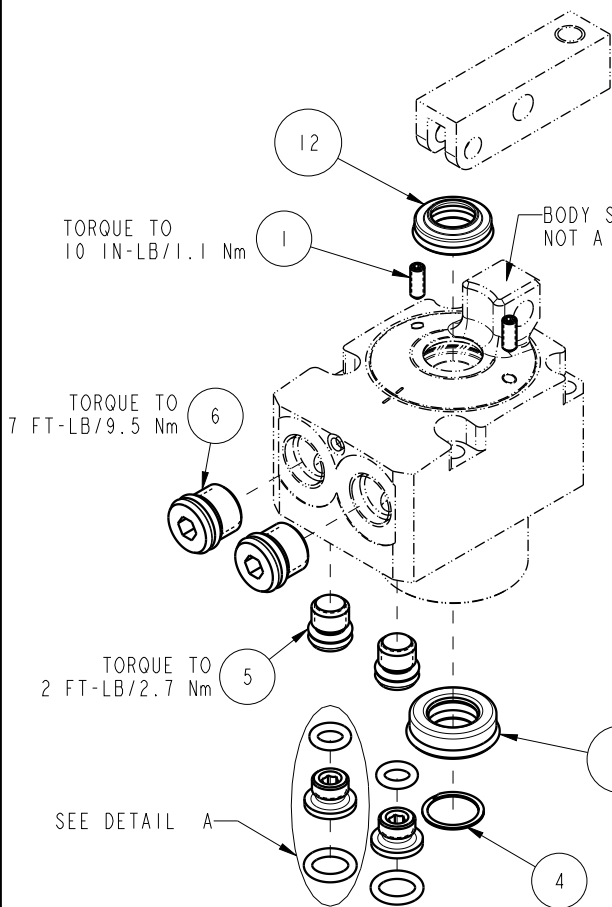


NO	QTY	PART NO	DESCRIPTION	STD SEAL KIT
1	2	21500316	SCREW, SET, CUP PT, M3 X .5 X 8	
2	2	23050031	RING, RTNG, EXT, 0.197	X
3	4	23050032	RING, RTNG, EXT, 0.236	X
4	1	23050049	RETAINING RING, SPIRAL, INTL	X
5	2	30601122	PLUG, SOCH, SAE 2	
6	2	30601144	PLUG, SOCH, SAE 4	
7	2	30871120	ASSY, ADAPTER, SC, TF, MM	X
8	1	39000064	O-RING, (17mm x 2)	X
9	2	39050036	O-RING, (-009)	X*
10	2	39050042	O-RING, (-011)	X*
11	1	39052058	SEAL, ROD, RSD, 10, 85A, AU	X
12	1	39053039	SEAL, WIPER, SNAP IN, WED, 10, 94A, AU	X
13	1	39056030	SEAL, CAP, PISTON, 12, 94A, AU	X
14	2	81600145	LINK, LC, 7MPa, 25B	
15	2	81600150	PIN, LINK, LC, 7MPa, 25B	
16	1	81600155	PIN, PLUNGER, LC, 7MPa, 25B	
17	1	81600250	PLUNGER, LC, TL360, DA, 600/2.73kN	
18	1	81600270	CAP, LC, TL360, 600/2.73kN	
N/A	N/A	60160200	KIT, SEAL, ASSY, LC, TL360, DA, 6001b	NOTED

*NOTE: ITEMS INCLUDED IN NO.7



PARTS LIST



VEKTEK, INC.
1334 E. SIXTH AVE. P.O. BOX 625
EMPORIA, KS. 66801 U.S.A.

ASSEMBLIES AFFECTED
16-3212-00

PARTS LIST, ASSY, LC, TL360, DA, 6001b

ROTARY LUG

SIZE
A

PL1619

REV
C

C	5089	RELEASE	ALS	5/2/23
REV	IN ACCORDANCE WITH ECN	EFFECTIVE DATE	REVISED BY	DATE
DRW BY:	BCD	DRAWING STATUS: Released		
DATE:	07-15-16	PRODUCTION APPROVED FOR RELEASED STATUS ONLY		

FORM FEG035_PL_ASIZE, REV. B

SHEET 1 OF 1